

VSO

# **CO-PRODUCTION SUPPORT COMPANY**

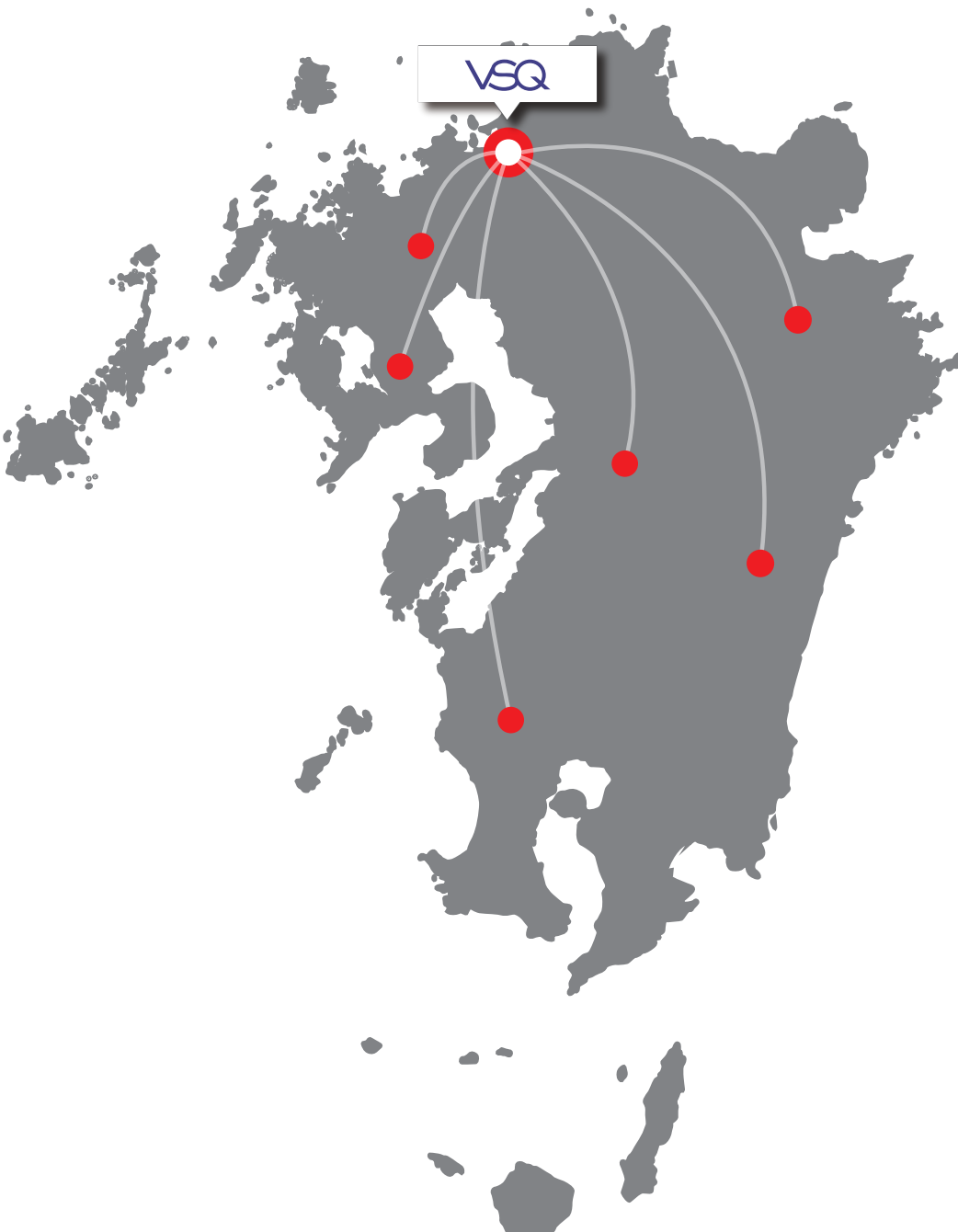
A video production company well established in Fukuoka, in the heart of Kyushu.

# Total Support

---

- ☐ Planning
- ☐ Location Scouting
- ☐ Car and Transportation Services
- ☐ Casting
- ☐ Equipment Support Services
- ☐ Catering and Food Services
- ☐ Translator Arrangement Services

# Location Scouting



Providing locations within Fukuoka prefecture, as well as in the other areas of Kyushu.

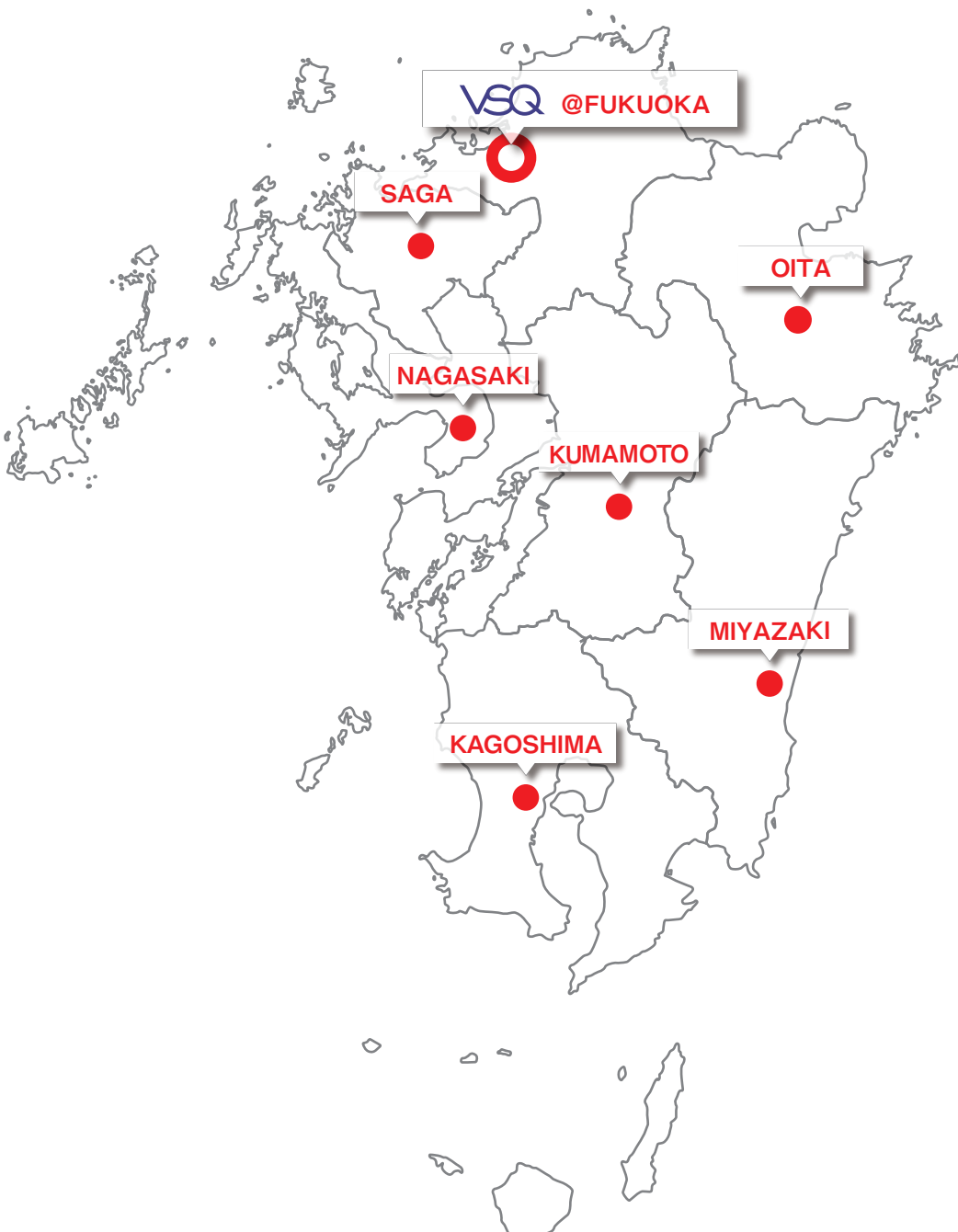
In addition to the place that fits the story, we can introduce many locations from many production experiences.

## 〔Main Location Support Services〕

- Research
- Create research materials
- Location attendants
- Application for road use permission
- Application for shooting permission
- Parking lot, waiting room preparation
- Shooting support etc...

★ We also have tools necessary during shoots.  
We provide production equipment at shoots.  
(chairs, tents, tables, walkie-talkie, pots, etc.)

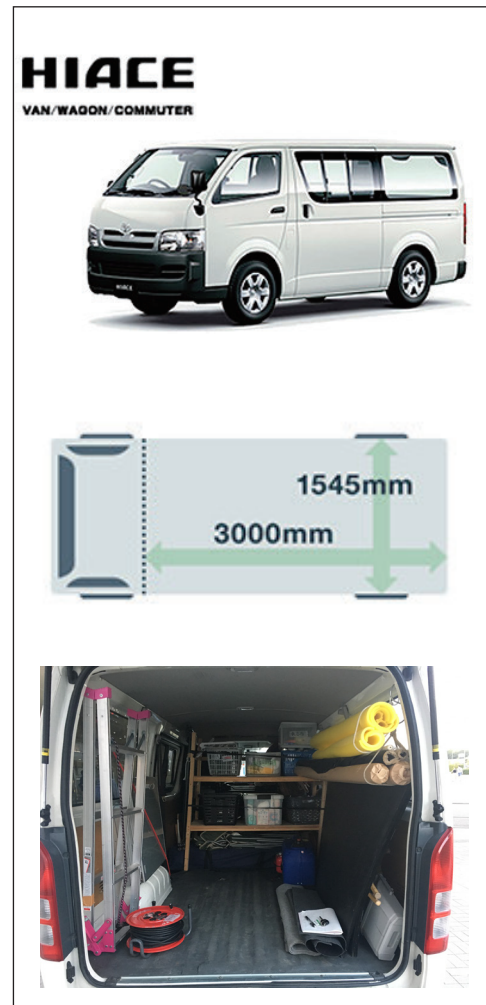
# Shooting in Kyushu



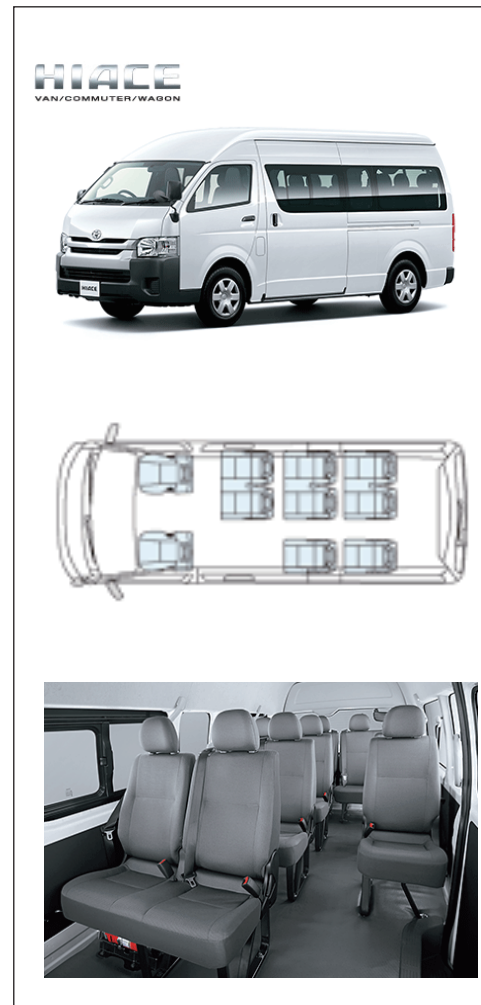
# Car and Transportation Services

Providing cars and trucks to meet your needs.

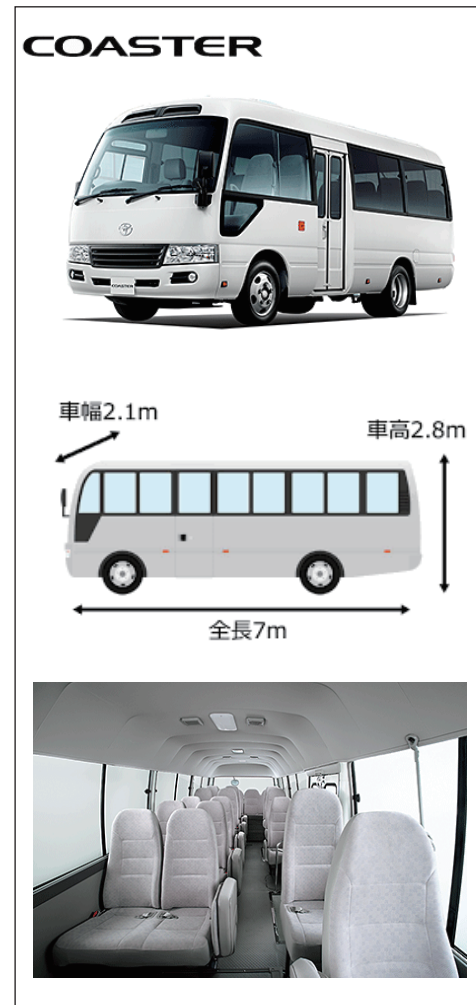
## ■ Hiace cargo vans



## ■ Hiace 10 person vans



## ■ Minibuses



## ■ Trucks





# Casting

---

We use a network centered in Fukuoka, but it spreads across all of Kyushu, giving you a wide variety of casting assistance. Based on plenty of experience, we will offer you options matching the genre of movies and drama you want to produce. We also have a network with business offices throughout the country.

## **〔Casting Support〕**

■Actors

■Comedians

■Children

■Animals

■Extras (Non-speaking)

## **〔Other casting operations〕**

- Negotiation for stage agreement
- Negotiation to appeal fees
- Schedule adjustment, etc.

# Equipment Support

---

Shooting equipments and studio, we support you with a wide range of equipment.

※The list below is just an example. We will get you what you need upon request.

## ■Camera

---

### 【Camera】

SONY PMW-F55 EF  
SONY  $\alpha$ 7S II  
SONY NEX-FS700R  
DJI OSMO  
CANON EOS-C300

### 【Recorder】

PANASONIC POV CAM  
ATOMOS SHOGUN

### 【Tripod】

VINTEN VISION100  
RONFORD Midium Duty 150 $\phi$   
RONFORD Hihat 150 $\phi$

### 【Lens】

CANON CN-E14MM  
CANON CN-E24MM  
CANON CN-E35MM  
CANON CN-E50MM  
CANON CN-E85MM  
CANON CN-E135MM  
SIGMA CINE 18-35MM T2.0 EF  
SIGMA CINE 50-100MM T2.0 EF  
CANON EF16-35MM  
CANON EF24-70MM  
CANON EF70-200MM

### 【Lens Accesary】

metabones E-EF SPEEDBOOSTER  
ARRI FF-5

## ■Grip

---

### 【Camera Grip】

BEETLE NARROW RAIL DOLLY  
DJI RONIN

### 【Light Grip】

C-STAND  
RANKER STAND  
FLAGS  
FLAMES  
END JAW CARDELLINI  
POLY HOLDER  
APPLE BOX [FULL, 1/2, 1/4, PANCAKE]  
SAND BAG  
MAGLINER  
FOLDING CART  
TROLLEY

## ■Light

---

HMI 575W UNIFOCUS  
LED LIGHT  
FLUORESCENT LIGHT

## ■Audio

---

### 【AUDIO Mixer】

SIGMA SS302  
SIGMA SS342  
SIGMA Ks342

### 【Microphone】

MKH-416  
MKH-816

## ■Drone

PHANTOM 4 PRO+V2.0

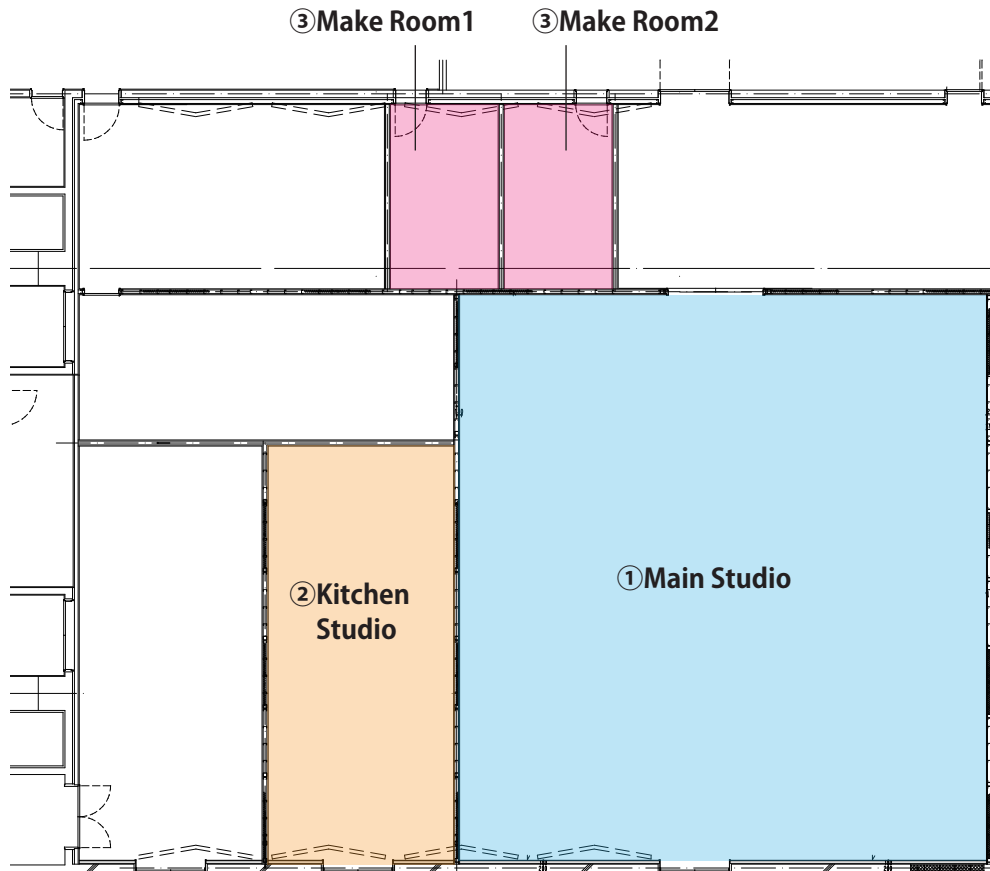


**We have more !**



# Equipment Support

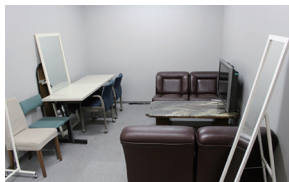
Shooting equipments and studio, we support you with a wide range of equipment.



② Kitchen Studio



③ Make Room1



③ Make Room2



## Studio

### 【Main Studio Layout】

Area ————— 204.95 m2

lighting bars ——— 6

hanging bars ——— 3

Lighting Control Panel 2 Tier,  
48 Playback Fader (PF) (Panasonic)

Electric Capacity — 100KVA

### 【Equipment】

Monitors

BT-LH-1700W (Panasonic 17inch LCD)

BT-LH910 (Panasonic 9inch LCD)

PVM-740 (sony 7.4inch OEL)

Easy Video Switcher

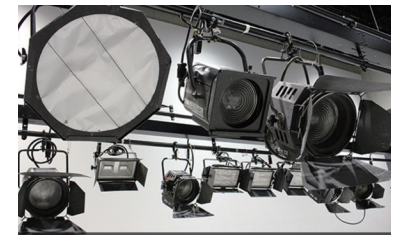
HS410N (Panasonic)

Mini Converters - Blackmagic Design

HDMI → HD-SDI, HD-SDI → HDMI, HD-SDI 6-way Splitters

※Two make-up rooms and meeting rooms, large and small,  
that can be used as conference rooms are available.  
There is also a kitchen studio available for catering at studio shooting.

① Main Studio



# Postproduction Support

Help with editing both online and offline, along with support for all of your needs.

## ■Editing

### [ED-1]

- Autodesk Flame Premium 2019(HP Z840)4k 60P  
Plug-in Sapphire Ver.11
- Sub PC : iMac(Late 2012)  
Final Cut Studio(FCP7)  
Adobe CC  
Flame Assist 2019

### [ED-2]

- GVG Edius 7(Turn Key)  
Plug-in VitaScene V2 Pro(Edius)
- LINEAR SYSTEM  
BVE-9100(SONY)  
SWITCHER ATEM 1M/E 4k(Blackmagic)
- CHARACTER GENERATOR  
LS600 Neo·n Grid(LAMBDA SYSTEMS)
- MIXER  
01V96i(YAMAHA)
- VTR  
HDW-M2000(SONY)  
AJ-HD1800(Panasonic)  
PDW-F1600(SONY)

### [ED-3]

- Autodesk Flame Premium 2019(HP Z840)4k 60P  
Plug-in Sapphire Ver.11
- Sub PC : iMac  
FinalCutStudio(FCP7)  
Adobe CC  
Flame Assist 2019

### [ED-4]

- Mac Pro(Late 2013:Apple)  
Adobe CC(PremierePro CC2017)  
FinalCutStudio(Apple)  
Plug-in Sapphire Ver.11
- VTR  
AJ-HD1700(Panasonic)  
PDW-F1600(SONY)

### [ED-5]

- GVG Edius 7(Turn Key)  
Plug-in VitaScene V2 Pro
- CHARACTER GENERATOR  
LS600 Neo·n Grid(LAMBDA SYSTEMS)
- VTR  
PDW-F1600(SONY)

## ■MACHINE ROOM (Media Copy)

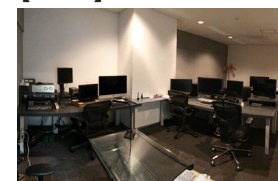
### [VTR]

- HDW-M2100(SONY)
- HDW-1800(SONY)
- PDW-F1600(SONY)
- AJ-HD1700(Panasonic)
- DVW-A500(SONY)
- DVR-20×3(SONY)
- HVR-1500(SONY)
- BVW-75(SONY)

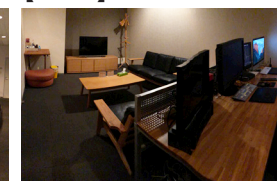
### [COPY]

- DMR-HS2(DVD) (Panasonic)
- DBRZ150(BD) (TOSHIBA)
- BD / DVD DUPLICATOR(1 -> 6)

[ED-1]



[ED-3]



[MACHINE ROOM]



# Postproduction Support

Rooms for working with audio editing

## ■ Recording

### 【MA-1】

#### ○SYSTEM

AVID Protocols 12 HDX System  
D-Command

#### ○SPEAKER

TANNOY Ellipse  
YAMAHA NS-10M STUDIO

#### ○PLUG-IN/SOFT

WAVES Mercury Bundle  
McDSP Emerald Pack  
Izotope RX6 Advanced (Noise reduction)  
Native Instrument KOMplete 11  
SPECTRASONICS Omnisphere/Trilian/Stylus RMX

### 【MA-2】

#### ○SYSTEM

AVID Protocols 12 HDX System

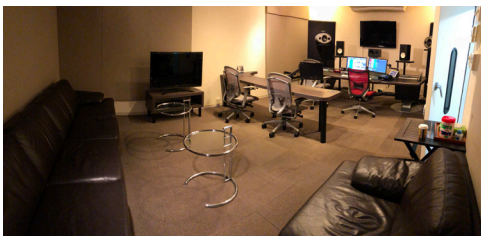
#### ○SPEAKER

GENELEC 8040A/YAMAHA NS-10M STUDIO

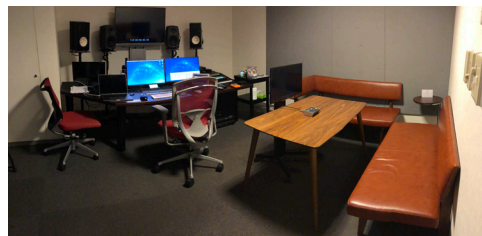
#### ○PLUG-IN/SOFT

WAVES Mercury Bundle  
Izotope RX6 Advanced (Noise reduction)

【MA-1】



【MA-2】



【NARRATION BOOTH-1】



【NARRATION BOOTH-2】





# Catering & Food Services

---

Providing delicious meals tailored to the preferences and budget of each client's country.  
After shoots, private requests from staff and performers are accepted.



**Let's go for it .**

Superior support and Japanese hospitality-  
Leading you to successful shoots.

**Thank you !**